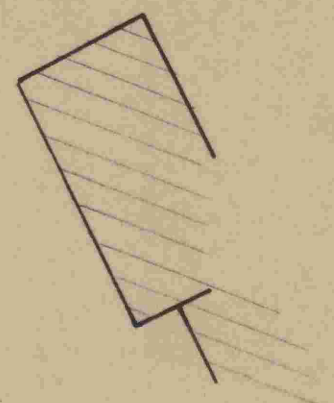
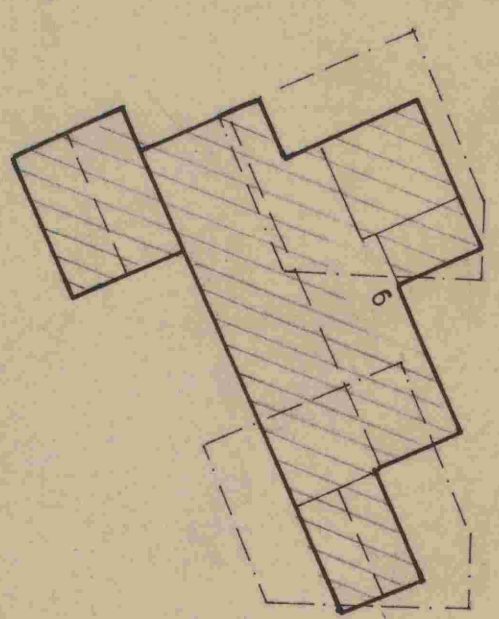
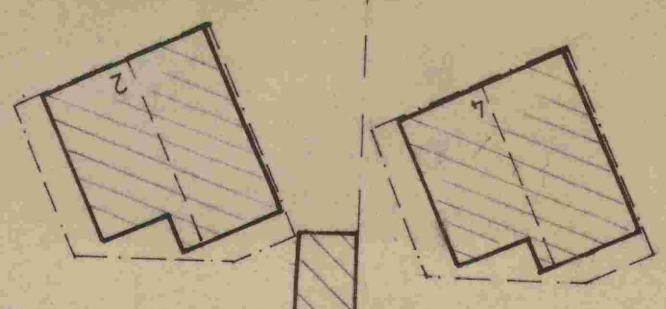


ROSTOCKER STRASSE



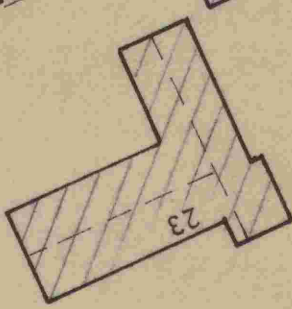
ÄNDERUNGSBEREICH



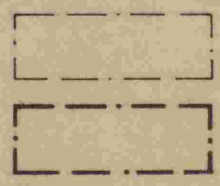
SPIELPLATZ

PROVINZIALSTRASSE

WR	Z 1
0,4	0,4
△ 35°	



ROONSTRASSE



VORH. ÜBERBAUBARE GRUNDST. FLÄCHE

GEPLANTE    ||    ||    ||

ENTWURF ZUR BEB. PL. ÄNDERUNG MA NR. 2  
M. 1:500